

MORRISON

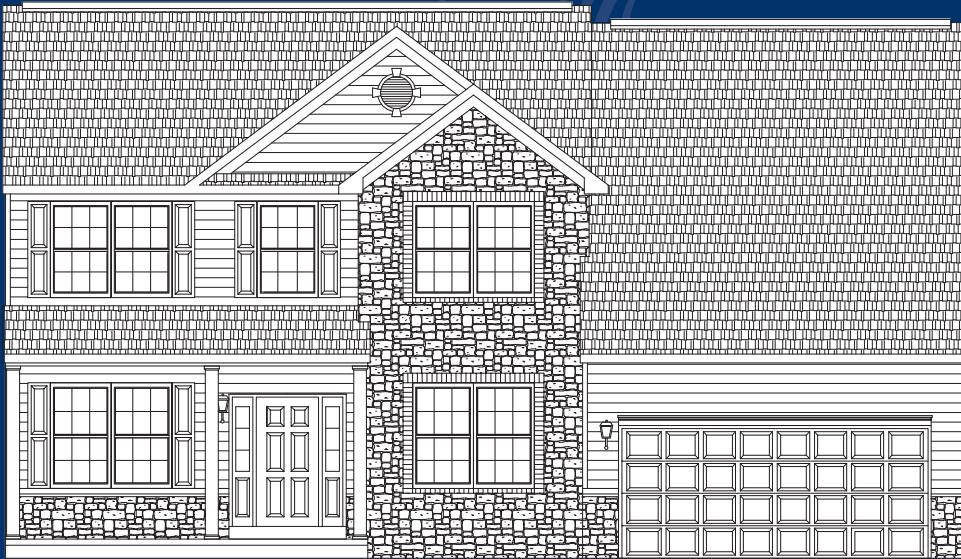
APPROXIMATELY 2,544 SQ. FT.

4 BEDROOMS, 2 ½ BATHS

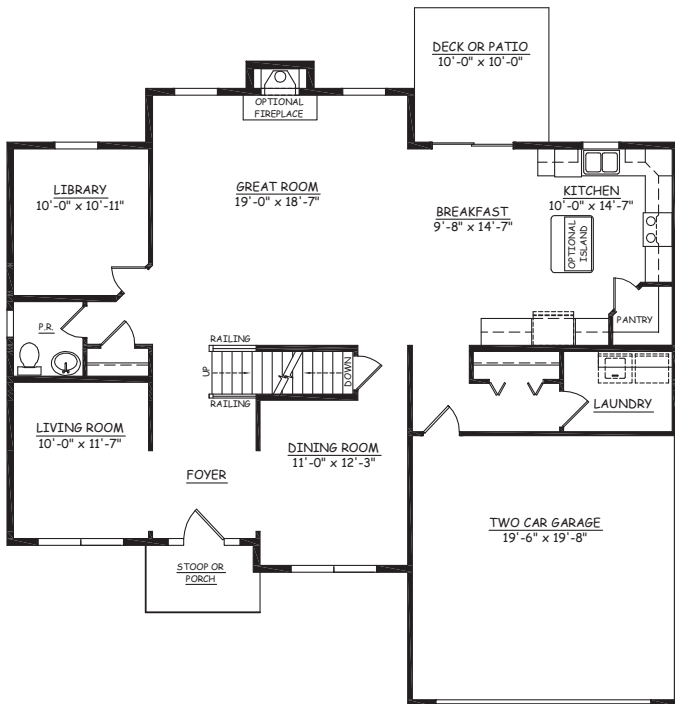
9' FIRST FLOOR CEILINGS

GRAND 2-STORY FOYER

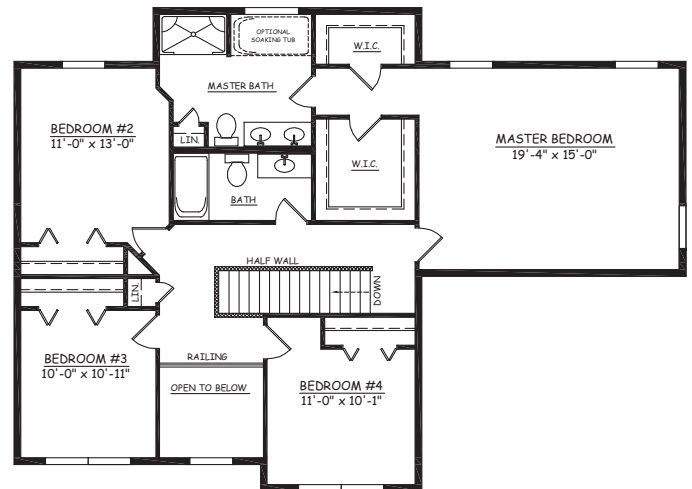
INCLUDES DECK OR PATIO



ELEVATION AS SHOWN; THE PREMIER



FIRST FLOOR



SECOND FLOOR



This sheet is for illustrative purposes only and not part of a legal contract. Plans are subject to modification. Room measurements are approximate. Optional items are available at additional cost. Refrigerator, washer and dryer are not included. All pricing based on home with Traditional elevation, standard lot, and construction financing. Illustration is artist's conception and may vary in precise detail. (03-31-2011)

MORRISON

ALTERNATE ELEVATIONS

THE TRADITIONAL (INCLUDED)



THE SIGNATURE (+ \$3,750)



THE PREMIER (+ \$6,510)



THE ESTATE (+ \$8,850)



This sheet is for illustrative purposes only and not part of a legal contract. Builder reserves the right to substitute different materials of equal or greater value if necessary. Illustration is artist's conception and may vary in precise detail. (03-31-2011)