

HOMESITE 57

CHESTNUT HOLLOW

THE BAYBERRY

APPROX. 1,402 FINISHED SQ. FT.

474 SQ. FT. OF UNFINISHED
LOWER LEVEL

3 BEDROOMS, 2 BATHS

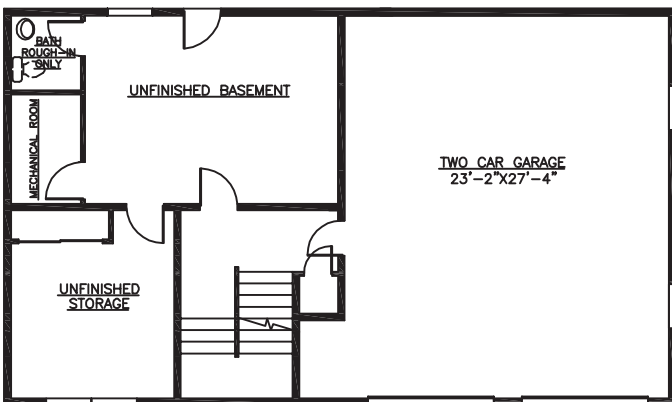
LARGE GREAT ROOM W/
CATHEDRAL CEILING

SPACIOUS KITCHEN W/
DINING ROOM

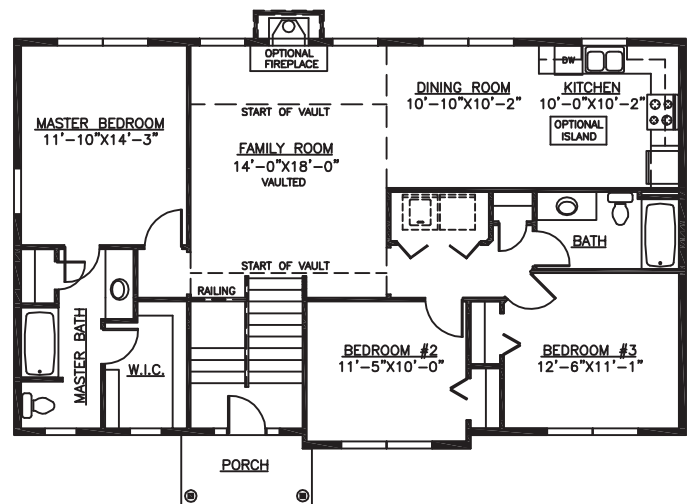
TWO CAR GARAGE



FRONT ELEVATION



FIRST FLOOR



SECOND FLOOR

This home features available options/upgrades and is a customized design based on the standard floor plan for this model. The plan and list price reflect the inclusion of these additions/changes. Please see agent for details



This sheet is for illustrative purpose only and not part of a legal contract. Plans are subject to modification. Room measurements are approximate. Individual unit elevations are based on an entire building and may vary. Optional items indicated are available at additional cost. Refrigerator, washer and dryer are not included. Illustration is artist's conception and may vary in precise detail. (01-06-2011)