

CYPRESS

APPROXIMATELY 2,478 SQ. FT.

4 BEDROOMS, 2 ½ BATHS

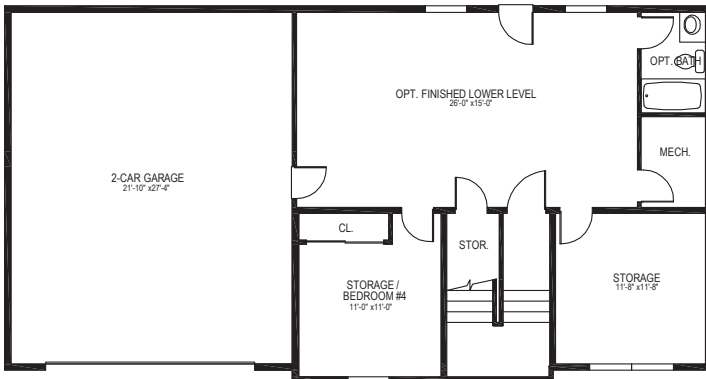
LARGE GREAT ROOM WITH
CATHEDRAL CEILING

SPACIOUS KITCHEN WITH
DINING ROOM

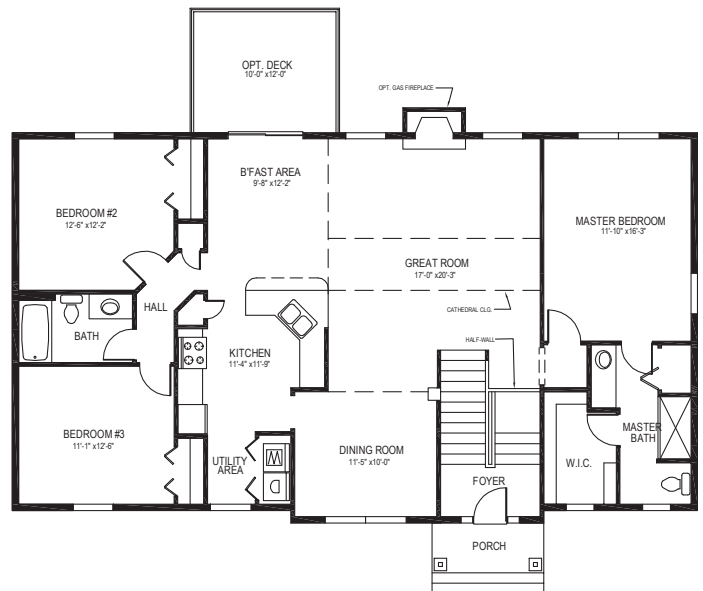
TWO-CAR GARAGE



FRONT ELEVATION



LOWER LEVEL



MAIN LEVEL



This sheet is for illustrative purpose only and not part of a legal contract. Plans are subject to modification. Room measurements are approximate. Elevations and landscaping are based on an artist's conception and may vary in precise detail. Optional items indicated are available at additional cost. (01-27-10)