

SYCAMORE

APPROXIMATELY 1,924 SQ. FT.

3 BEDROOMS, 2 BATHS

LARGE GREAT ROOM WITH
CATHEDRAL CEILING

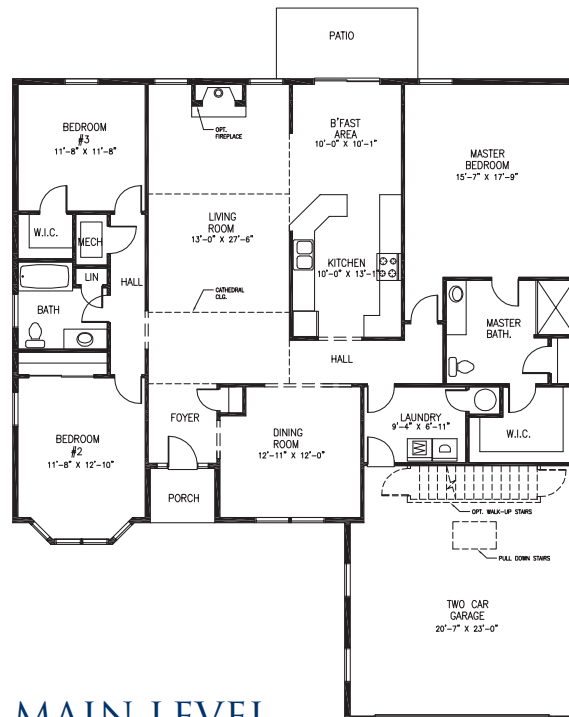
SPACIOUS KITCHEN WITH
BREAKFAST AREA

FORMAL DINING ROOM

TWO-CAR GARAGE



FRONT ELEVATION



MAIN LEVEL



This sheet is for illustrative purpose only and not part of a legal contract. Plans are subject to modification. Room measurements are approximate. Elevations and landscaping are based on an artist's conception and may vary in precise detail. Optional items indicated are available at additional cost. (01-17-12)