

419 SANTA ANITA DRIVE LOGAN MEADOWS

HOMESITE #45

APPROXIMATELY 2,688 SQ. FT.



4 BEDROOMS, 2 1/2 BATHS

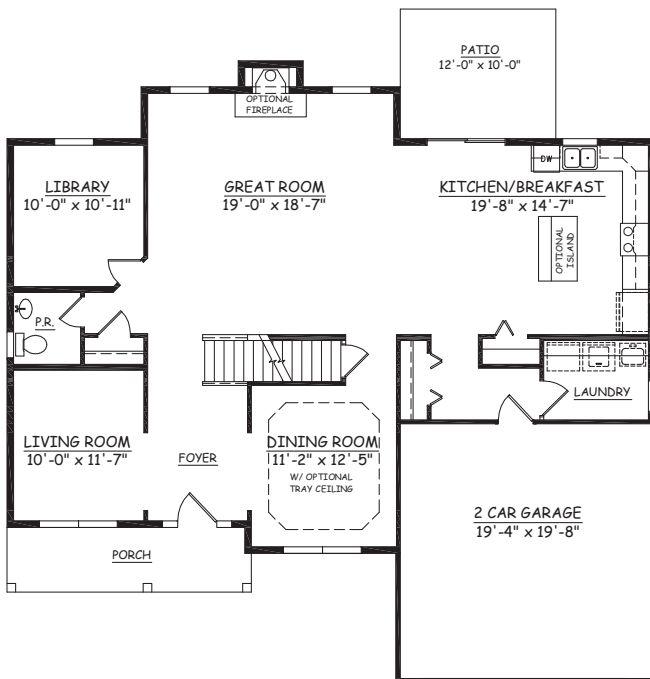
9' FIRST FLOOR CEILINGS

GRAND 2-STORY FOYER

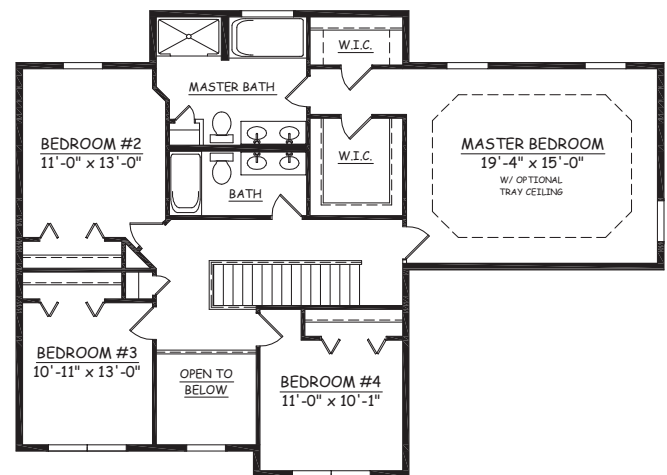
FIRST FLOOR LAUNDRY

MASTER BATH
W/ WHIRLPOOL TUB

FRONT ELEVATION



FIRST FLOOR



SECOND FLOOR

This home features available options/upgrades and is a customized design based on the standard floor plan for this model. The plan and list price reflect the inclusion of these additions/changes. Please see agent for details



This sheet is for illustrative purpose only and not part of a legal contract. Plans are subject to modification. Room measurements are approximate. Individual unit elevations are based on an entire building and may vary. Optional items indicated are available at additional cost. Refrigerator, washer and dryer are not included. Illustration is artist's conception and may vary in precise detail. (11-19-2010)