

HUMMINGBIRD II

MAPLE GLEN
UNITS 25-30

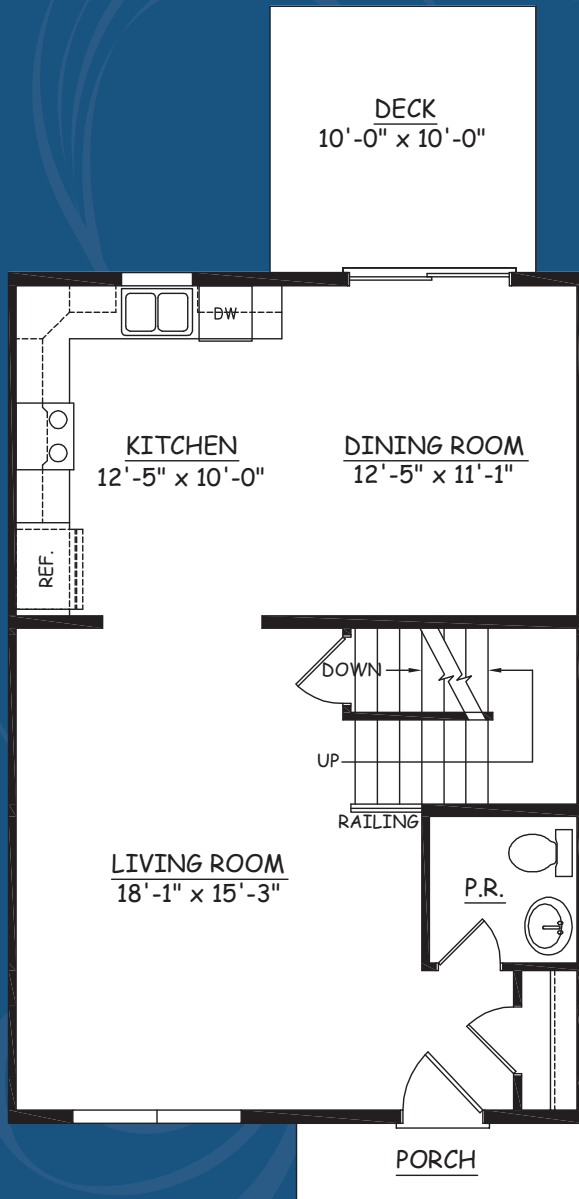
APPROXIMATELY 1,371 SQ. FT.

OPEN KITCHEN AND DINING ROOM

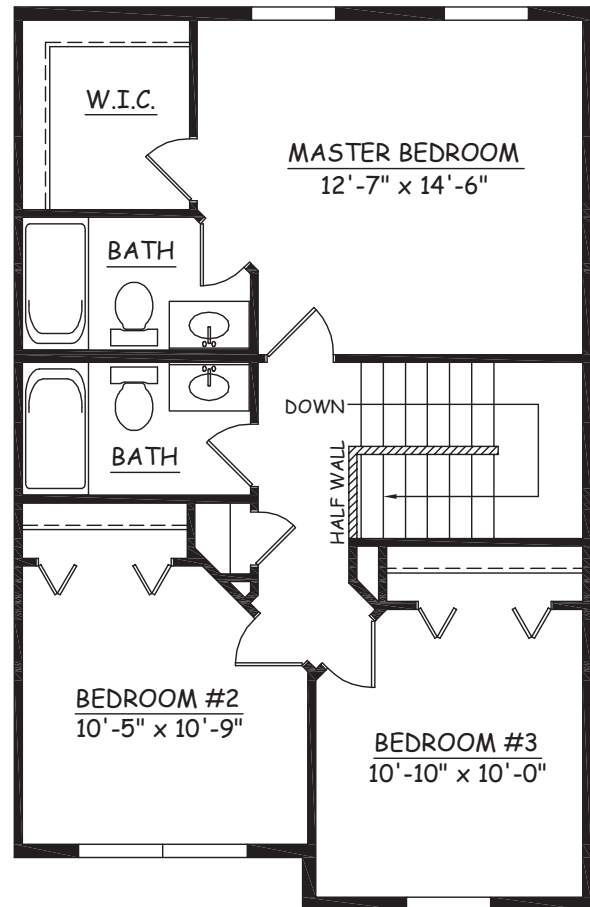
SPACIOUS LIVING ROOM

2 FULL BATHS WITH
FIRST FLOOR POWDER ROOM

FULL UNFINISHED BASEMENT
WITH LAUNDRY



FIRST FLOOR



SECOND FLOOR



This sheet is for illustrative purpose only and not part of a legal contract. Plans are subject to modification. Room measurements are approximate. Individual unit elevations are based on an entire building and may vary. Optional items indicated are available at additional cost. Refrigerator, washer and dryer are not included. Illustration is artist's conception and may vary in precise detail. (6-25-10)