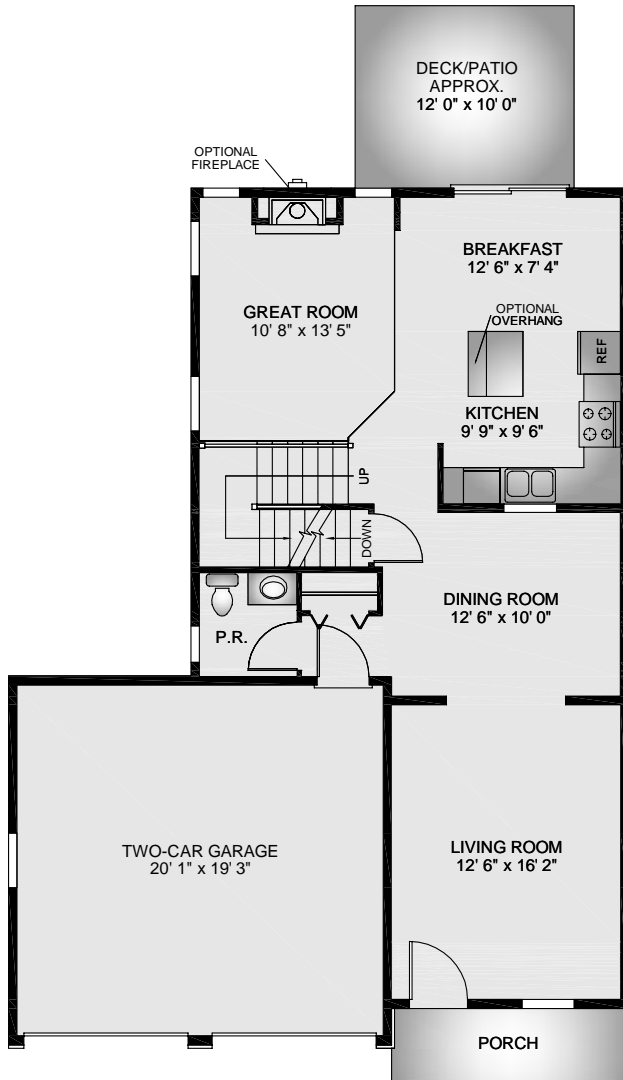
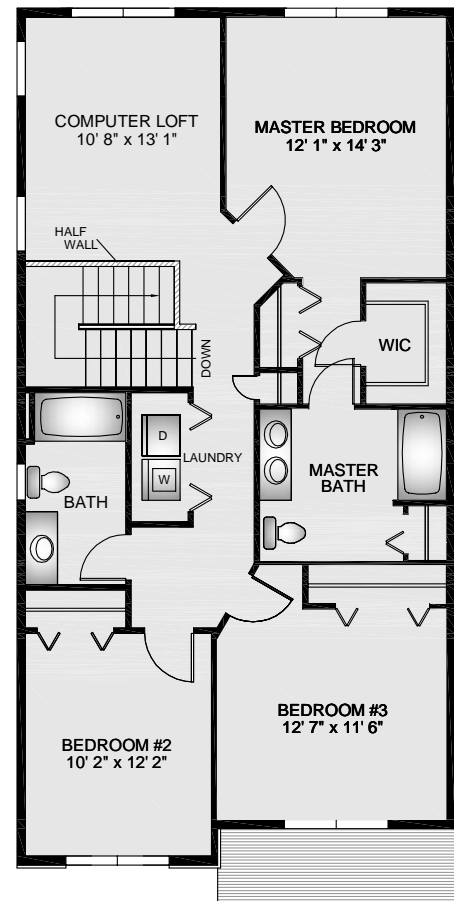


DUNLIN II TWO-CAR GARAGE

- Approximately 1,968 Square Feet Unit
- Four Piece Master Bath
- Open Computer Loft or Opt. Fourth Bedroom
- Eat-in Kitchen with Island and Separate Dining Room
- Two Car Garage/ Full Basement



First Floor



Second Floor



Quality Built by:



This sheet is for illustrative purpose only and not part of a legal contract. Plans are subject to modification. Room measurements are approximate. Individual unit elevations are based on an entire building and may vary. Optional items indicated are available at additional cost. Illustration is artist's conception and may vary in precise detail. (2-17-2009)