

MONROE



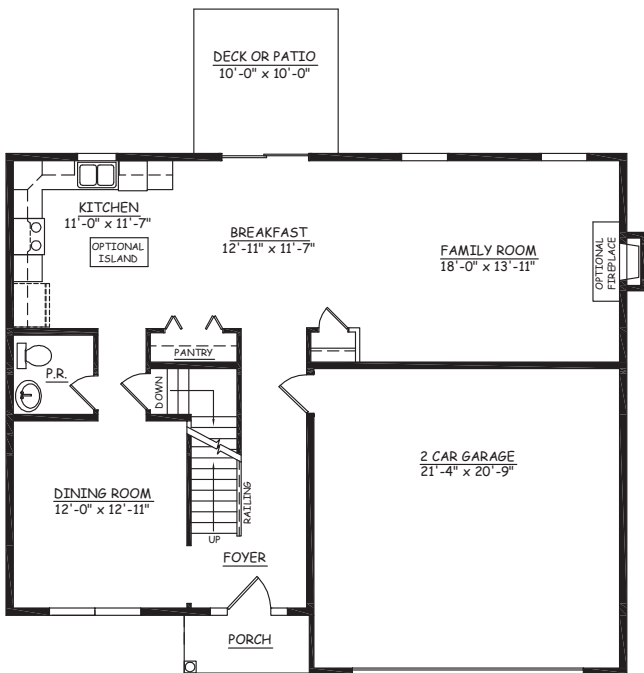
ELEVATION AS SHOWN; THE PREMIER

APPROXIMATELY 2,061 SQ. FT.

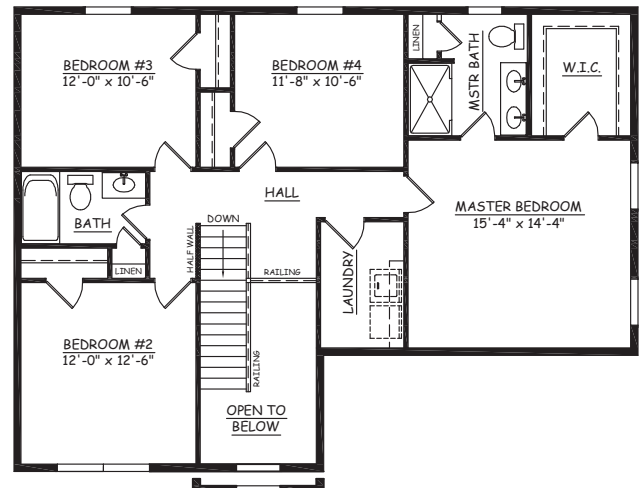
4 BEDROOMS, 2 ½ BATHS

OPEN FLOOR PLAN

INCLUDES DECK OR PATIO



FIRST FLOOR



BUMPOUT W/ PLANT SHELF IS INCLUDED ON SIGNATURE, PREMIER, & ESTATE ELEVATION

SECOND FLOOR



This sheet is for illustrative purposes only and not part of a legal contract. Plans are subject to modification. Room measurements are approximate. Optional items are available at additional cost. Refrigerator, washer and dryer are not included. All pricing based on home with Traditional elevation, standard lot, and construction financing. Illustration is artist's conception and may vary in precise detail. (11-29-2011)



MONROE

ALTERNATE ELEVATIONS

THE TRADITIONAL (INCLUDED)



THE SIGNATURE (+ \$4,995)



THE PREMIER (+ \$6,850)



This sheet is for illustrative purposes only and not part of a legal contract. Builder reserves the right to substitute different materials of equal or greater value if necessary. Illustration is artist's conception and may vary in precise detail. (11-29-2011)