

# HOMESITE 192

## SILVER CREEK

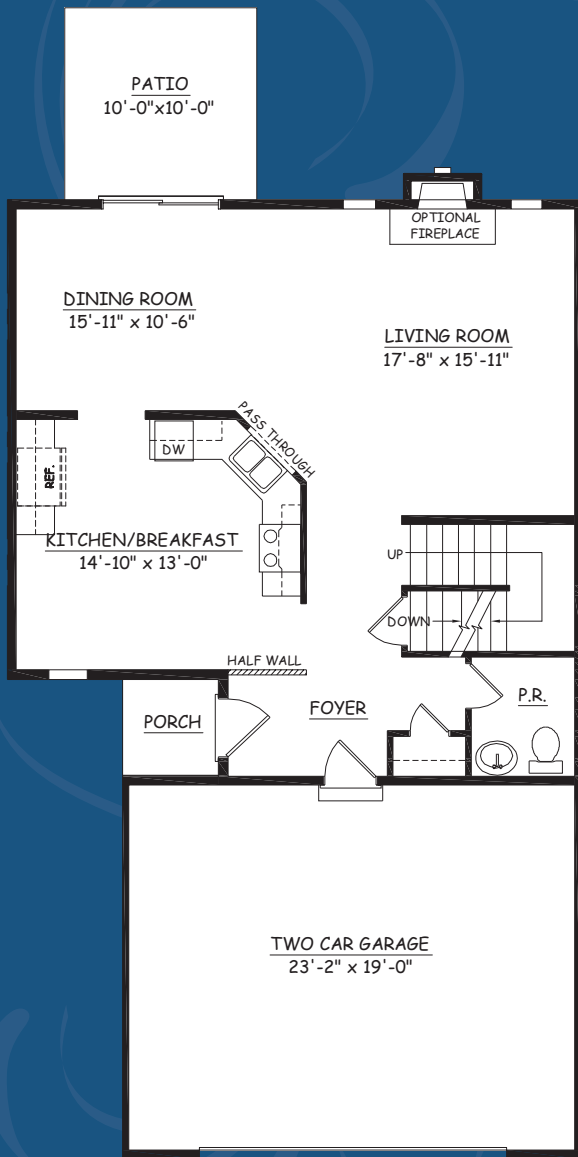
# JULIA (4 BEDROOM)

APPROXIMATELY 2,121 SQ. FT.

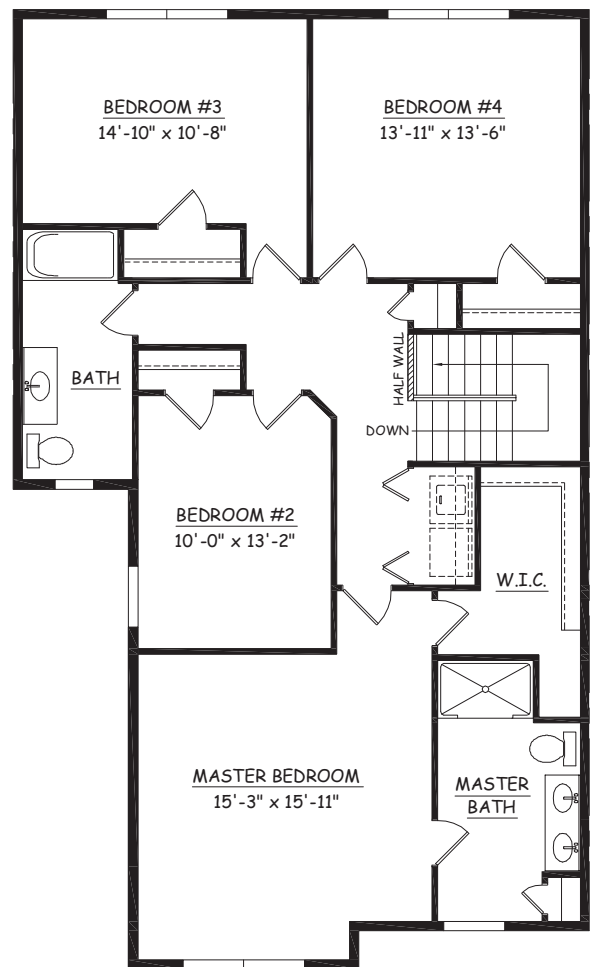
4 BEDROOM, 2 1/2 BATH

BEAUTIFUL FORMAL DINING ROOM

TWO-CAR GARAGE / FULL BASEMENT



**FIRST FLOOR**



**SECOND FLOOR**



This sheet is for illustrative purpose only and not part of a legal contract. Plans are subject to modification. Room measurements are approximate. Individual unit elevations are based on an entire building and may vary. Optional items indicated are available at additional cost. Refrigerator, washer and dryer are not included. Illustration is artist's conception and may vary in precise detail. (11-15-11)